

D500 Undercounter Dishwasher

Technical Specifications



CLASSEQ
Warewashing Made Simple.

D500

Front loading commercial dishwasher with three minute wash cycle and simple two button controls for effortless, consistently clean results.

The D500 is an easy to operate dishwasher with a 500 x 500mm basket that holds 18 full-sized plates. With its three minute wash cycle, this machine is capable of cleaning up to 360 plates per hour.

With a digital LED display, intuitive colour coded lighting and universally recognised symbols, this machine is incredibly easy to use, plus features performance enhancing customisations through its advanced settings modes. Additionally, its clever software constantly monitors wash cycles, temperatures, chemical usage and any errors giving valuable data which is used to improve operational efficiencies.

The D500 comes as standard with a gravity drain, which is suitable in instances where the machine is above the waste outlet. The optional drain pump (D500P) is essential where the drainage is either higher than the machines waste outlet, or has to be pumped to a stand pipe.



Optional Drain Pump
Our D500 is also available
with an Optional Drain Pump.
Model code: D500P.

Warewashing made simple:



Locally manufactured

Our machines are Made in Britain (Staffordshire) meaning shorter lead times on delivery, parts and support.



User Friendly

We've maximised our user experience through, two simple button controls.



Simple Colour Coded Display

Amber flashing - Machine heating
Blue - Machine in cycle
Red - Error management activated
Green - Standby mode



3 Minute Cycle Time

The D500 three minute cycle allows for maximum output without compromising wash quality.



Advanced Customer Features

Adjust rinse aid and detergent settings and priming of chemical pumps.



Operational Monitoring

Our machine constantly monitors heating and water usage to improve the efficiency.

Machine Features:

1 500mm x 500mm basket	2 Built-in chemical pumps	3 Energy saving standby mode	4 Removable basket guides
5 Dual wash filter system	6 Temperature interlock - guarantees hot rinse	7 Assisted self-clean	8 Noise reducing double skinned door

Hydraulic specifications

D500

Water supply connection	G3/4" (3/4" BSP)
Minimum allowed supply water pressure	2.0 bar
Required water flow rate	11 L/min
Minimum incoming water temperature	4°C
Maximum incoming water temperature	55°C
Gravity drain height (from machine base)	40 mm
(Optional) Pumped drain height (from machine base)	600 mm
Drain size	Ø40 mm

Electrical specifications

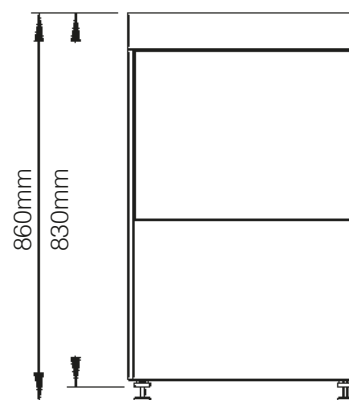
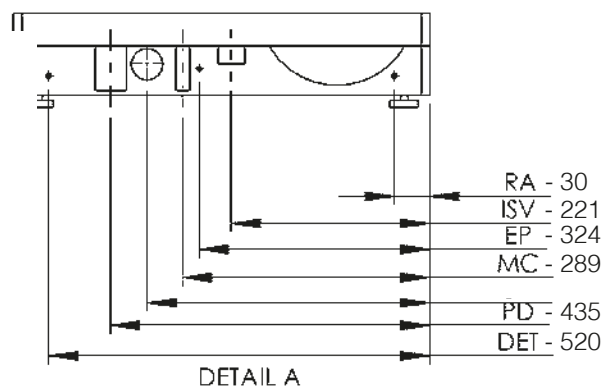
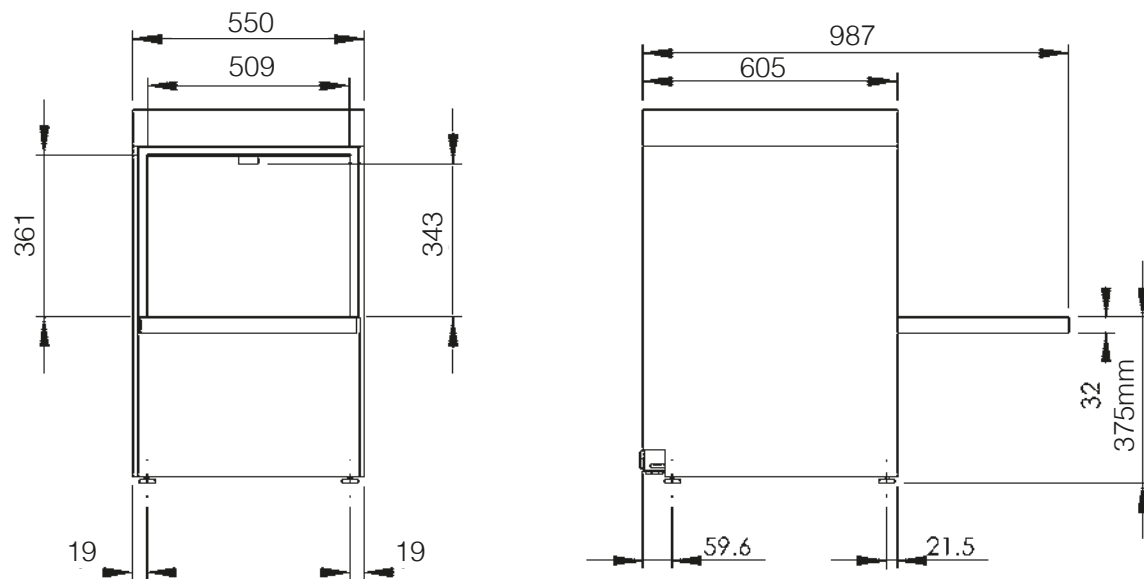
Operating voltage - Standard	220-240V / 1N~ / 50Hz
Operating voltage - Optional	380-415V / 3N~ / 50Hz
Maximum power	6.58kW
Total connected load - Standard	30A
Total connected load - Optional	12A

Performance

Wash tank element	2.00kW
Rinse tank element	6.00kW
Wash tank capacity	14.5 litres
Rinse tank capacity	7.5 litres
Rinse water consumption at 3 bar	3.00 L/cycle
Theoretical maximum racks/hours	20
Wash tank temperature	55°C
Rinse tank temperature	82°C
Wash pump power	0.58 kW
Rinse pump power	N/A

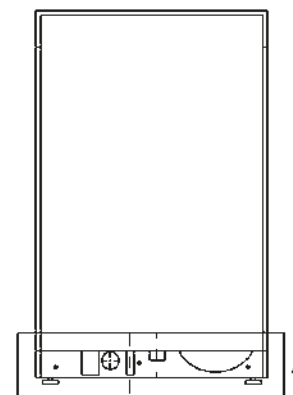
Please Note: G500P Specification as above.

Mechanical Specifications



Additional Info:

Wash water temperature	55°C
Dish Washer rinse temperature	82°C
Noise level	Under 70dB
Empty weight	44kg
Fully Loaded weight	64.5kg
Packed weight	57.6kg



Dimensions (mm):

(Closed Door) 410 (W) x 644 (H) (674 max) x 605 (D)
 (Open Door) 570 (W) x 830 (H) (860 max) x 987 (D)

Description	Symbol	Radius from machine (m)
Rinse aid tube	RA	3
Inlet solenoid value	ISV	1.8
Mains electrical cable	EC	1.3
Pumped waste water outlet	PD	1.5
Equipotential bonding stud	EP	-
Detergent tube	DET	3

Please Note: All dimensions in mm

Contact:

Tel: +44 (0)844 225 9250
 Email: sales@classeq.co.uk

Classeq Ltd, Roebuck Way,
 Knowlhill, Milton Keynes MK5 8WH

www.classeq.co.uk

CLASSEQ
 Warewashing Made Simple.